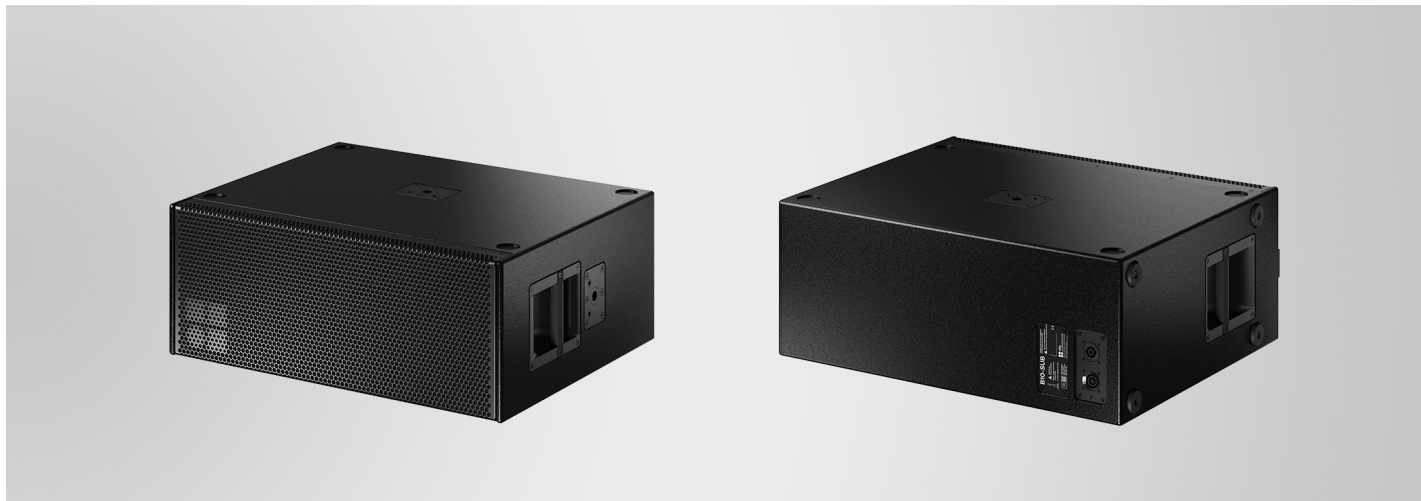


# The B10-SUB subwoofer

- preliminary -



The cabinets house two 10" long excursion neodymium driver in a bass-reflex cabinet featuring a large port design.

The frequency response extends from 38 Hz to 130/100 Hz.

The cabinet enclosure is constructed from marine plywood and has an impact and weather protected PCP finish. The front of the cabinet is protected by a rigid metal grill backed by an acoustically transparent foam and one handle is incorporated on each side panel.

Four rubber feet prevent cabinet movement and protect the bottom panel against scratching.

Four correspondingly shaped recesses are incorporated in the top panel to accept these rubber feet and prevent cabinet movement when stacking.

In addition four rubber feet are also incorporated in one side panel to prevent cabinet movement and protect the side panel against scratching when the cabinet is used in upright position.

An M20 threaded flange together with two threaded inserts M8 is incorporated in the top and on the right side panel to accept a corresponding pole for the deployment of TOP cabinets or to attach a dedicated flying adapter.

## d&b amplifiers

The d&b audiotechnik loudspeaker range is designed exclusively for operation with d&b amplifiers. These provide power as well as comprehensive control and protection functions tailored to achieve the performance, reliability and longevity associated with the d&b system approach.

## System data

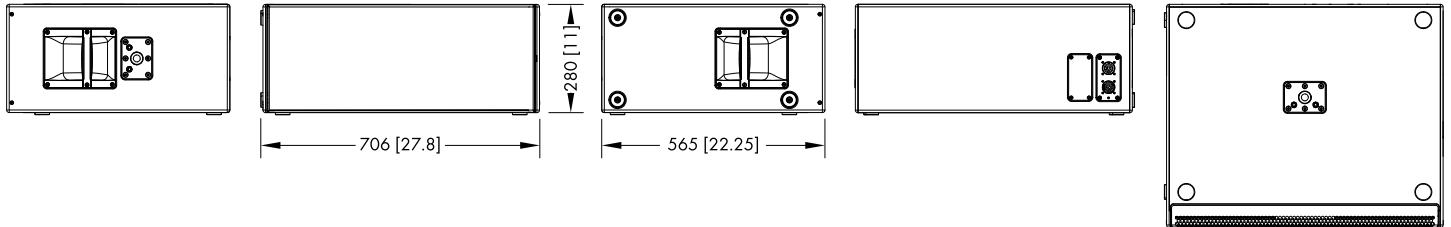
Frequency response (-5 dB Standard) .....	38 Hz - 130 Hz
Frequency response (-5 dB 100 Hz mode) .....	38 Hz - 100 Hz
Frequency response (-10 dB standard, IEC60268) .....	34 Hz - 170 Hz
Frequency response (-10 dB 100 Hz mode, IEC60268) ..	34 Hz - 140 Hz
Max. SPL (Peak, 1 m, free field, pink noise with crest factor 4) .....	
with D90/D80/D40/40D .....	130 dB
with D25/D20/25D/30D .....	128 dB
with 5D/5DM .....	127 dB
with 10D .....	126 dB

## Loudspeaker data

Nominal impedance .....	6 ohms
Power handling capacity (RMS/peak 10 ms) .....	500/1200 W
Components .....	2 x 10" driver
Connections .....	1 x NLT4 F/M
Pin assignment .....	2+/2-
Weight .....	27 kg (60 lb)

# The B10-SUB subwoofer

- preliminary -



**B10-SUB cabinet dimensions in mm [inch]**

## Architectural specifications

The loudspeaker shall be a compact high performance subwoofer.

It shall consist of two 10" long excursion neodymium drivers in a bass-reflex design.

The loudspeaker shall only be operated by a dedicated, compatible controller amplifier.

The cabinet enclosure shall be made from marine plywood with an impact resistant paint finish.

The driver shall be protected by a rigid metal grill backed by an acoustically transparent and water repellent fabric.

Each side panel shall incorporate a handle.

A threaded insert M20 together with two threaded inserts M8 shall be incorporated in the top and one side panel to accept either a pole for the deployment of applicable TOP cabinets or dedicated mounting accessories such as brackets and/or flying adapter.

Four rubber feet shall be incorporated in the bottom panel to prevent the cabinet from movement and scratching and four corresponding recesses in the top panel shall be incorporated to prevent movement of stacked cabinets.

The connection panel on the back shall be recessed and fitted with speakON NLT4 F/M sockets.

The power handling capacity shall be 500 W RMS and 1200 W peak

(10 ms). The frequency response (-5 dB) measured on axis shall be 38 Hz to 130 Hz with a maximum sound pressure of at least 130 dB.

The dimensions (W x H x D) shall not exceed 706 x 280 x 565 mm (27.8" x 11" x 22.25") and shall weigh no more than 27 kg (60 lb).

The loudspeaker shall be the B10-SUB by:  
d&b audiotechnik GmbH & Co. KG.